

Introducing





The next generation of dual model scanning

F8 enables you to do more thanks to fast scan-to-design workflows
and minimal scanner interaction



More efficiency

#1 **Dual model scanning** for minimized scanner interaction

#2 Intuitive magnetic place-and-scan design, auto-start, in-software and visual lights guidance, for **improved user experience**

#3 Flexible ethernet-powered networking, for **simple scanner sharing** among multiple workstations

More versatility

#1 **Easy articulator scanning** with no fixation or removal of pin required

#2 **Exclusive F8 tools**, plus the ability to use your favourite older tools, expands indication versatility and ease of scanning

#3 A wide range of scan workflows allow you to **provide a complete range of services to your clinics**

More speed

#1 **More than 20% faster*** end-to-end workflows to reduce the time spent on scanning

#2 **9 second full arch scan speed** – the same fast speed as the award-winning 3Shape E4

#3 **Open scanner design** for quick and easy access to place and remove models

More efficiency

Do more, with fewer steps.

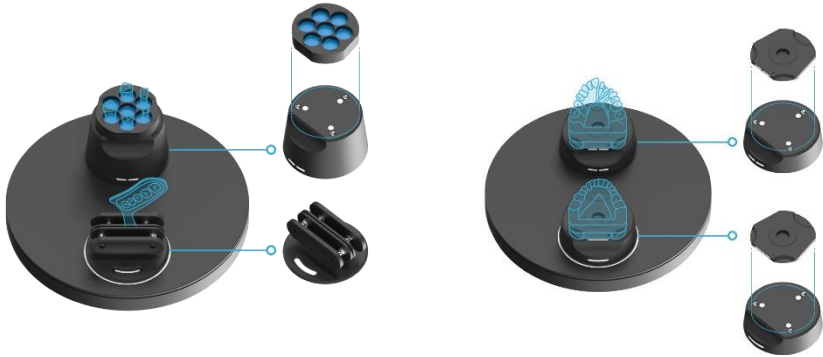
Reduce technicians' hands-on time
with **dual model scanning**
Free up time to concentrate on other tasks



An intuitive user experience

New on-screen guidance

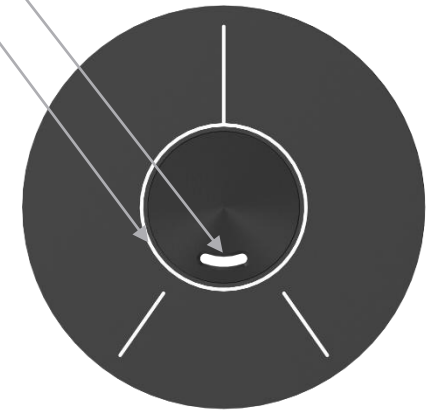
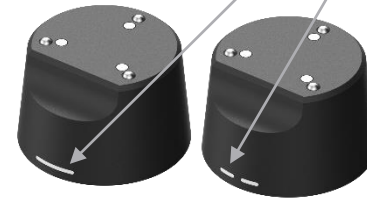
All dual model workflows have been updated for intuitive tools usage and placement all for faster interaction.



Clear and easy guidance

All tools guide you to correct placement of both the tool and the model

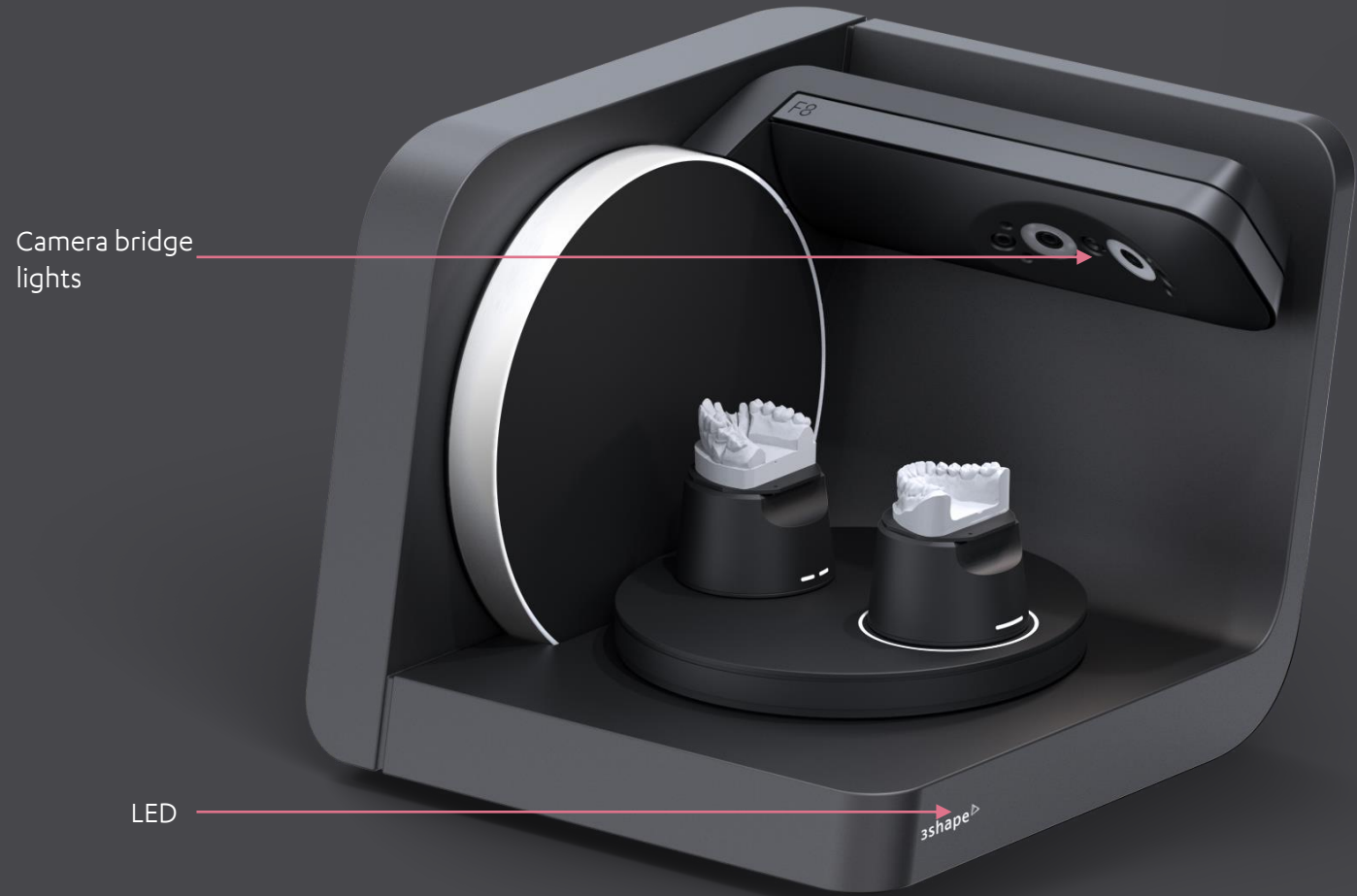
- Upper model and lower model on triple tray impression fixture
- Match “smiley” cut out on articulator plate and vertical tray fixture with scanner
- Markings on articulator plate for correct placement of articulator
- 1-stripe/2-stripe corresponds to position 1 and 2 on scanner



An intuitive user experience

Clear visual guidance

The new optimized camera bridge with light emission dimmer, lights up when the scanner is ready for interaction. The LED light next to the 3Shape logo also indicates the status of the scanner.





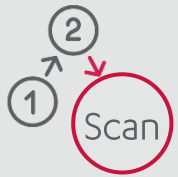
Upgraded stability and scanner sharing with ethernet capabilities

Connect the F8 to a PC via ethernet for stability and ease of set up. Initiate scans from multiple PCs with scanner sharing to reduce the number of scanners your lab requires.

More versatility

Provide a complete range of quality services.

Effortless articulator scanning



Simple as 1-2 scan

The new articulator workflow only requires you to insert the articulator plate, place the articulator and start scanning



No fixation needed

The smooth and non-tilting movements of F8 enable you to place the articulator without any fixation



Full sweep in one go

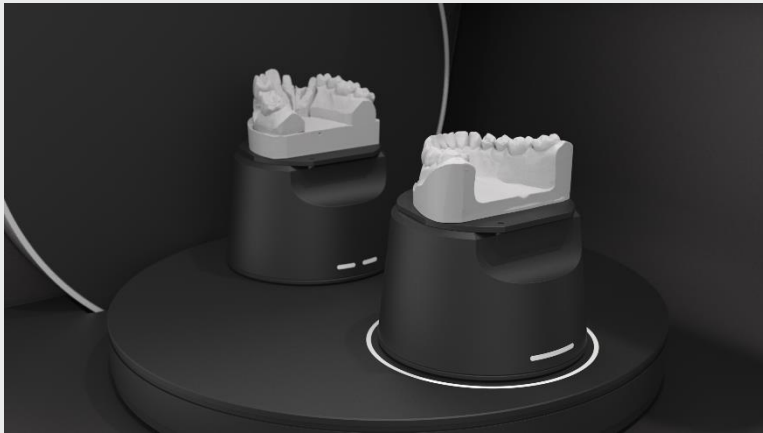
The scanner will make one full scan every time to fully benefit from the improved automatic bite alignment



F8 includes exclusive new tools

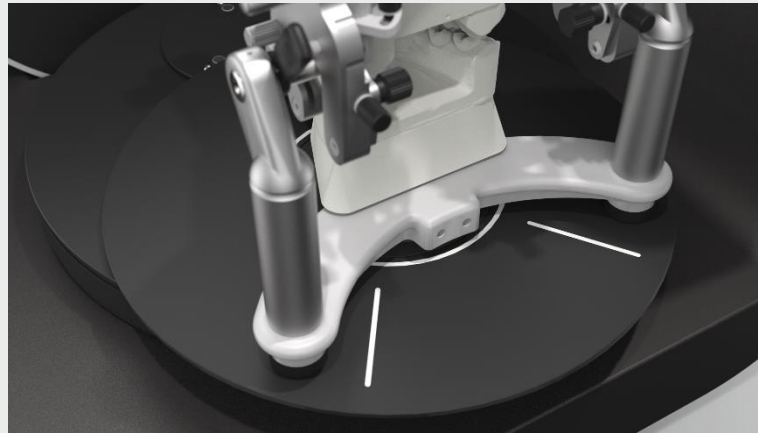
Quality

High quality tools, exclusively made for the F8 – quality tools for quality work.



Efficiency

The new scanner tools enable efficient workflows with fewer interactions – enabling you to do more, at once.

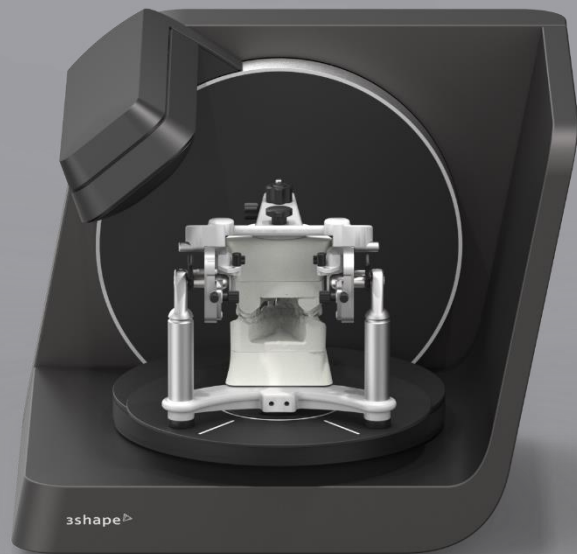


Flexibility

The new scanner tools increase your flexibility to scan what you want, how you want. And your favorite legacy indication tools are also supported.



Provide a complete range of
quality services to your clients
with less effort



More speed

Stay on top of your caseload.

F8 saves you significant time compared to D2000



More than 20% faster scan-to-design dual model workflows compared to D2000



Single model scans can be performed in 9 seconds

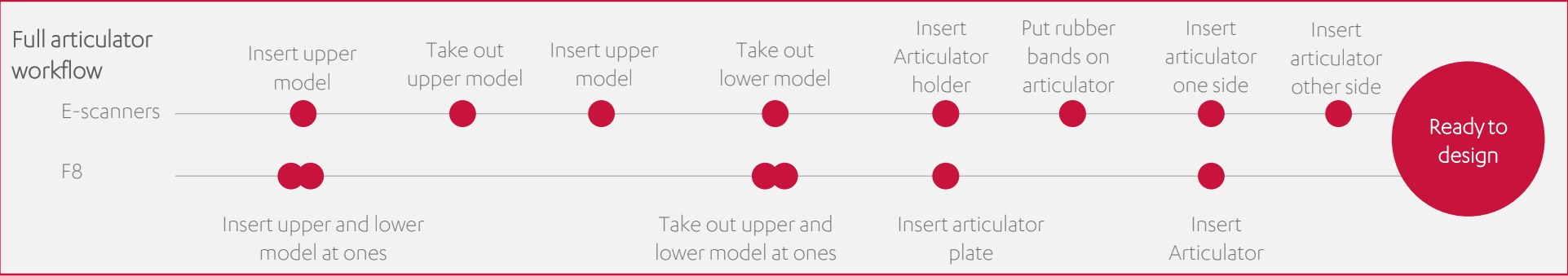
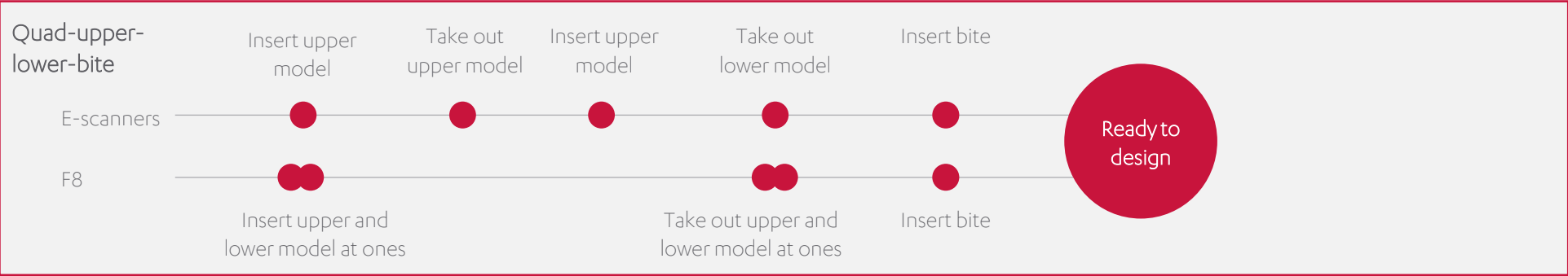


Improved software to increase speed of operation and calculations



F8 requires fewer scanner interactions compared to E4, so users can do more during scanning

● Scanner interaction



- F8 provides longer periods without scanner interactions
- Fast, skilled and dedicated E4 users can reach similar workflow speeds as F8, but F8 delivers more consistent workflows speed as less awareness and interactions are required

In action: Articulator scan






An open scanner design speeds up your workflows

- Always open and ready for interaction
- Bigger opening for faster and easier loading of models
- Easy cleaning when things get dusty





Technical specifications

Scanner Features		Dimensions, HWL (cm)	35 x 44 x 43
		Cameras	4 x 5 MP
		Accuracy (ISO 12836)	4 µm
		Scan speed (full arch)	9 sec
		Scan speed (full arch impression)	45 sec
		Texture	Color
		Scanning strategy	All-in-one* / die in model
		Dual model scanning	✓
		Scanner connection	Ethernet
		Auto-start	✓
		Tilt-free scanning	✓
		Legacy indication tools	Yes + F8 tools
		Server client set-up	✓
Software and apps		ScanIt Dental scanner software	✓
		Dental System (with option for cheaper scale-up)	Add-on
		Studio Apps	Add-on
		3Shape LMS (Essentials free / Premium paid)	✓
Service and support		Warranty with LabCare	5 years
		Express replacement	✓

Scanner and Tools



List of supported legacy tools

Support		Tools
Supported	●	Impression Fixture
Supported	●	Wieland Impression Fixture
Supported	●	Full Denture Fixture
Supported	●	Multi Die Fixture
Supported	●	Wax Up Fixture
Supported	●	Blu Tack
Supported	●	Interface Plates
Supported	●	Two Cast Fixture
Supported	●	Generic Art Tr. Plate I Generic Art Tr. Plate II
Supported	●	Implant Cast Fixture
Supported	●	Occlusion Set-up Tool
Supported	●	Occlusion Setup Int. Plate Occlusion Setup Calib. Plate
Supported	●	Articulator Calibration Object
Not supported	●	Scan Height Adapter from E and D-scanners



What's in the box?

There is a 3Shape Lab Scanner suited for your needs

F8



**Lean scan-to-design workflows
minimizing scanner interaction**
for labs with the most demanding
requirements

E4



**High speed and no limits
efficiency** for full service digital
labs

E3



**Essential scanning with implant
bar accuracy** suitable for most
digital labs

E2



A smooth entry to digital for labs
working in crown and bridge

Technical specifications for 2023 Lab Scanner Portfolio

Technical specifications for 2023
b Scanner Portfolio

		F8	E4	E3	E2	
						
Scanner Features		Cameras	4 x 5 MP	4 x 5 MP	2 x 5 MP	2 x 5 MP
		Accuracy (ISO 12836)	4 µm	4 µm	7 µm	10 µm
		Scan speed (full arch)	9 sec	9 sec	18 sec	24 sec
		Scan speed (full arch impression)	45 sec	45 sec	64 sec	72 sec
		Texture	Color	Color	Color	B/W
		Scanning strategy	All-in-one / die in model	Die in model	Standard	Standard
		Dual model scanning	✓	✗	✗	✗
		Scanner connection	Ethernet	USB	USB	USB
		Auto-start	✓	✓	✓	✓
		Tilt-free scanning	✓	✗	✗	✗
Software and apps		Support additional indication tools	Yes + F8 tools	Yes*	Yes*	Yes*
		Server client set-up	✓	✓	✓	✓
		ScanIt Dental scanner software	✓	✓	✓	✓
		Dental System (with option for cheaper scale-up)	Add-on	Add-on	Add-on	Add-on
		Studio Apps	Add-on	Add-on	Add-on	Add-on
Service and support		3Shape LMS (Essentials free / Premium paid)	✓	✓	✓	✓
		Warranty with LabCare	5 years	5 years	5 years	5 years
		Express replacement	✓	✗	✗	✗

* No support for F8 specific tools

Get the most out of your scanner investment

You can choose between two service packages to complement your 3Shape solution – LabCare or Basic. The LabCare subscription package is optional and gives high value services to keep you ahead. The Basic package offers limited services free of charge. Both options are flexible, and you can subscribe or unsubscribe when needed.*

LabCare

Subscription

Authorized support

Get help from experts in your local language and time zone

Software upgrades

Get all new software releases with the latest developments including libraries, workflows and tools

Wide range of training options

Access to hands-on training events and lectures held by authorized 3Shape experts and renowned speakers

25% discounts

- on additional seats
- subscription on additional seats
- on 3Shape Academy training at a local 3Shape facility**

5-year warranty

Protect your new scanner investment with a 5-year warranty***



Basic

No subscription

Pay-per-case support

Get expert help in your local language on a pay-per-case basis

Perpetual software version

You are licensed to use the software version corresponding to the year of purchase

Self training

Train at your own pace using our self-training videos and manuals

No discounts

Not eligible for special offers

1-year warranty

Basic 1-year warranty on new scanner purchases

* Terms and conditions apply

** Subject to availability in your country.

*** Contact your local sales manager for availability

Footprint of the new PC portfolio



Desktop
Standard PC



Desktop High
Performance PC



Desktop Ultra PC

PC specifications can be
found in the PC catalogue

Let's change dentistry together